

MONTHLY MEMBERSHIP PROGRESS REPORT

LOCATION GREECE

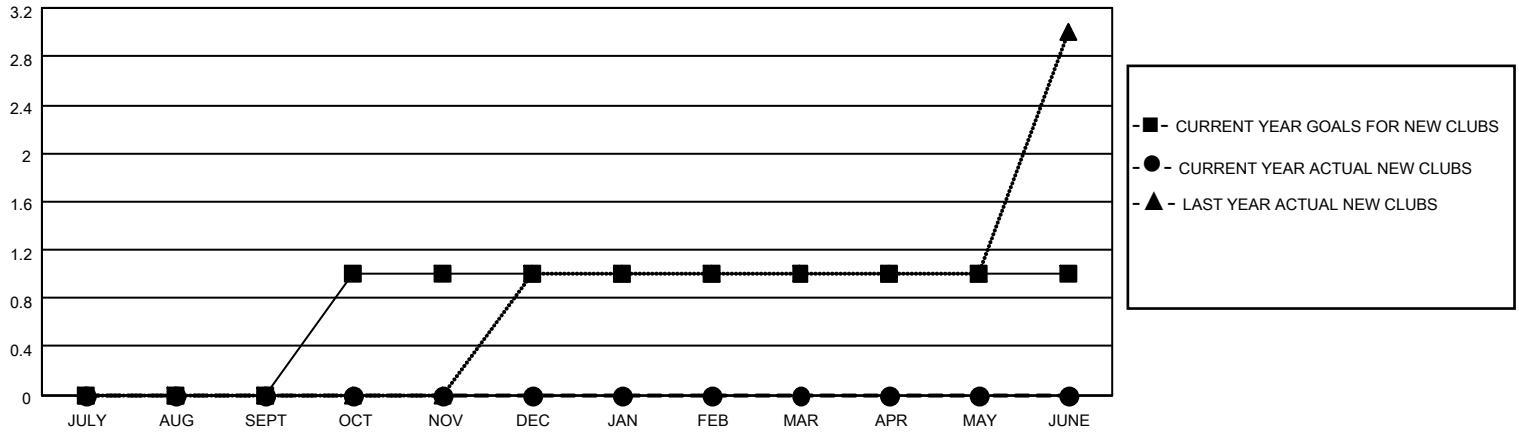
District 117 B

Results as of: 5/31/2023

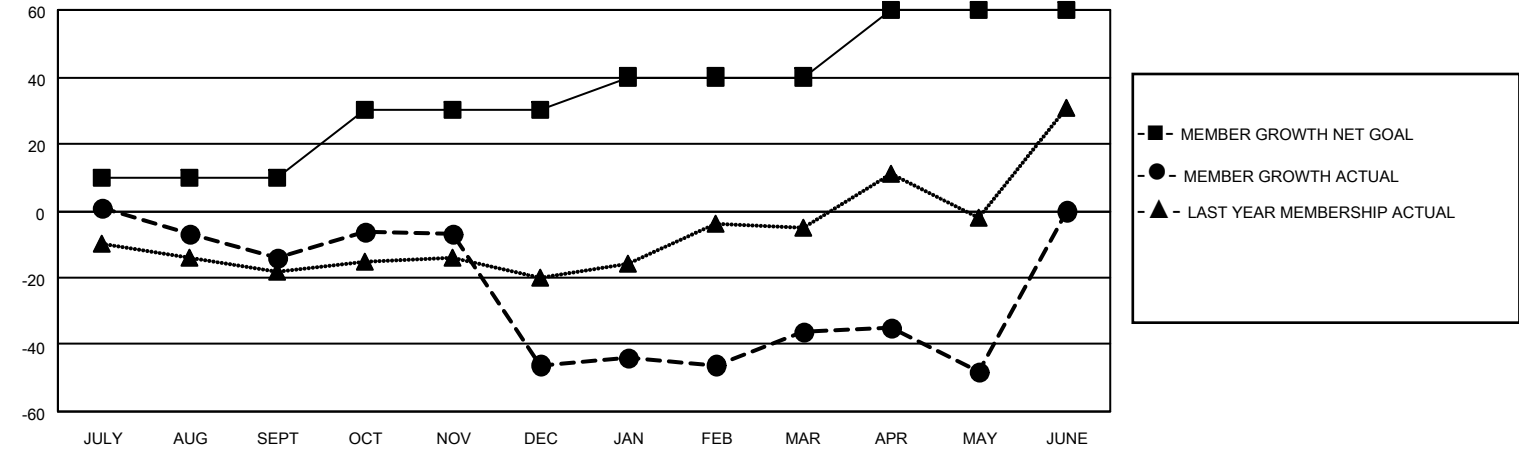
Clubs			
RESULTS FOR 2022-2023			
QUARTER	NEW CLUB GOAL	NEW CLUBS	DROPPED CLUBS
JULY/AUG/SEPT	0	0	0
OCT/NOV/DEC	1	0	1
JAN/FEB/MAR	0	0	0
APR/MAY/JUNE	0	0	0

Members			
RESULTS FOR 2022-2023			
QUARTER	MEMBER GROWTH NET GOAL	MEMBER GROWTH ACTUAL	DROPPED MEMBERS ACTUAL (including transfers)
JULY/AUG/SEPT	10	11	23
OCT/NOV/DEC	20	29	60
JAN/FEB/MAR	10	30	14
APR/MAY/JUNE	20	11	23

GOALS AND ACTUAL NEW CLUBS CUMULATIVE



GOALS AND ACTUAL MEMBERS CUMULATIVE



DROPPED CLUBS: 1	
DROPPED MEMBERS	
DECEASED	12
CLUB CANCELLED	19
OTHER	89
TOTAL	120

25 CLUBS OF 56 ADDED 1 OR MORE NEW MEMBERS

[CLICK HERE FOR CUMULATIVE MEMBERSHIP DATA](#)

<u>GENDER DISTRIBUTION</u>	
MALE	526 (43.44%)
FEMALE	684 (56.48%)
NON BINARY	0 (0.00%)
PREFER NOT TO ANSWER	1 (0.08%)
TOTAL FAMILY UNIT MEMBERS	271
FAMILY MEMBERS PAYING HALF DUES	151